
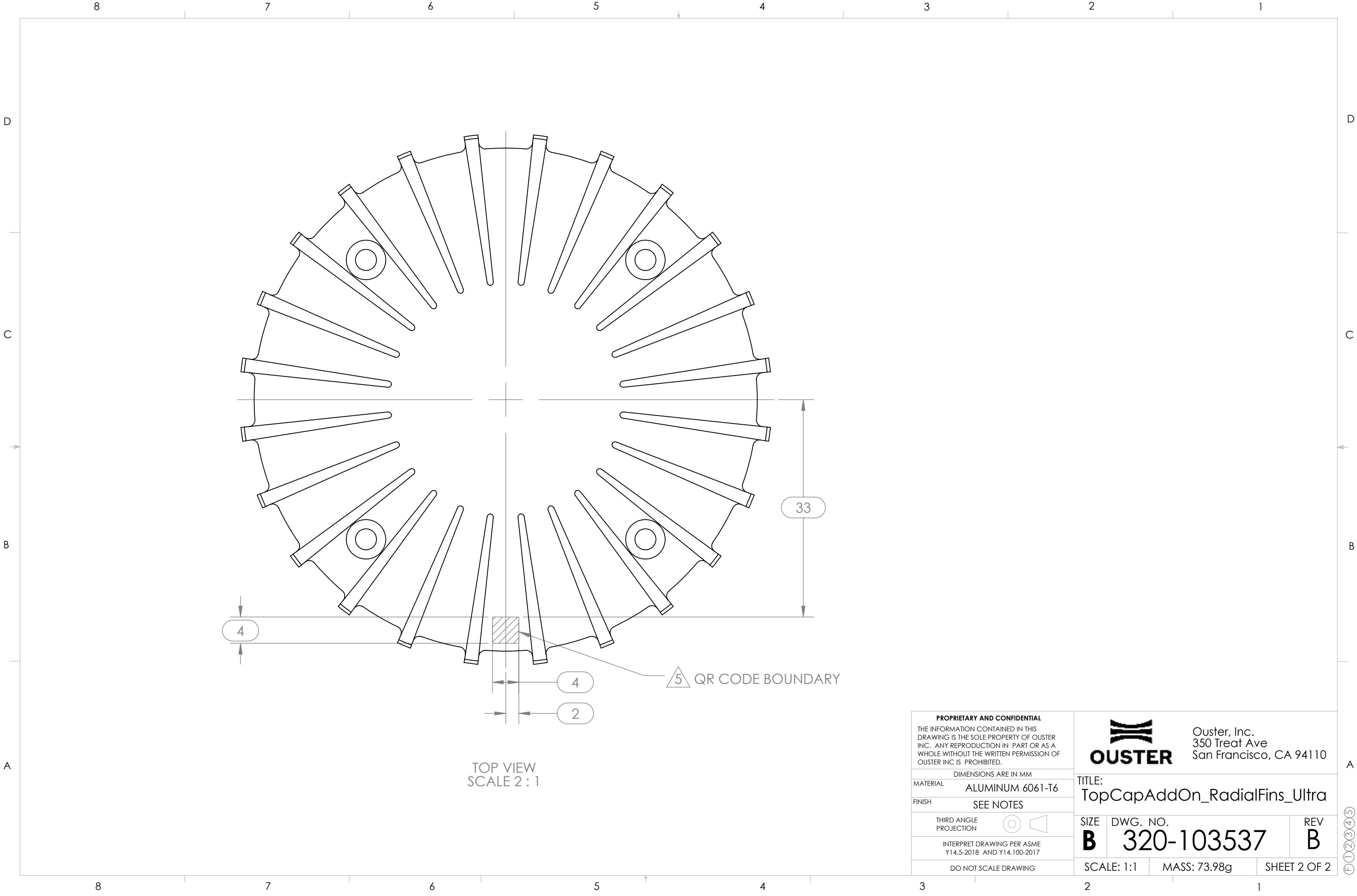




REVISIONS				
ZONE	REV.	DESCRIPTION	DATE	APPROVED
	A	Initial Release for Ultrascale TTB	2021-07-22	HA
	B	COUNTERBORE SIZE CHANGE, DRAWING UPDATE	2021-12-13	YK

- NOTES:**
- (ENCIRCLED DIMENSIONS) ARE FOR FIRST ARTICLE INSPECTION ONLY.
  - REFER TO CAD DATA OF SAME NAME FOR MODEL GEOMETRY.
  - DIMENSIONS AND REQUIREMENTS APPLY AFTER FINISH.
  - UNLESS OTHERWISE SPECIFIED,
    - ALL SURFACES ARE CONSIDERED "CLASS B" AS DEFINED BY THE CURRENT VERSION OF OUSTER VMI SPECIFICATION (DOC #SQA00009).
    - LINEAR DIMENSION TOLERANCE ±0.13.
    - PROFILE TOLERANCE 0.26 A B C.
    - POSITION TOLERANCE Ø 0.26 A B C.
    - MAX SURFACE ROUGHNESS 1.6 µm Ra.
    - BREAK ALL SHARP EDGES 0.1 mm TO 0.5 mm.
  - PART MARKING:
    - CONTAIN PART MARKING IN SPECIFIED REGION.
    - INSPECT LOCATION ONLY AT FIRST ARTICLE.
    - MUST COMPLY WITH THE LATEST VERSION OF OUSTER PART MARKING SPECIFICATION (DOC #SQA-00013).
  - FINISH:
    - CLEAR ANODIZE PER MIL-A-8625 TYPE II AFTER SAND BLAST (SEE NOTE 7).
- 7 LIGHT SAND BLAST INDICATED SURFACES. MATCH SAMPLE SWATCH PROVIDED BY OUSTER. DO NOT SAND BLAST OTHER SURFACES.

<b>PROPRIETARY AND CONFIDENTIAL</b> THE INFORMATION CONTAINED IN THIS DRAWING IS THE SOLE PROPERTY OF OUSTER INC. ANY REPRODUCTION IN PART OR AS A WHOLE WITHOUT THE WRITTEN PERMISSION OF OUSTER INC IS PROHIBITED.		 <b>OUSTER</b> Ouster, Inc. 350 Treat Ave San Francisco, CA 94110	
DIMENSIONS ARE IN MM		<b>TITLE:</b> TopCapAddOn_RadialFins_Ultra	
MATERIAL ALUMINUM 6061-T6		<b>SIZE</b> <b>B</b>	
FINISH SEE NOTES		<b>DWG. NO.</b> <b>320-103537</b>	
THIRD ANGLE PROJECTION		<b>REV</b> <b>B</b>	
INTERPRET DRAWING PER ASME Y14.5-2018 AND Y14.100-2017		<b>SCALE: 1:1</b>	
DO NOT SCALE DRAWING		<b>MASS: 73.98g</b>	
		<b>SHEET 1 OF 2</b>	

F12345



<b>PROPRIETARY AND CONFIDENTIAL</b> THE INFORMATION CONTAINED IN THIS DRAWING IS THE SOLE PROPERTY OF OUSTER INC. ANY REPRODUCTION IN PART OR AS A WHOLE WITHOUT THE WRITTEN PERMISSION OF OUSTER INC IS PROHIBITED.		 <b>OUSTER</b> Ouster, Inc. 350 Treat Ave San Francisco, CA 94110	
DIMENSIONS ARE IN MM		TITLE: TopCapAddOn_RadialFins_Ultra	
MATERIAL	ALUMINUM 6061-T6		
FINISH	SEE NOTES	SIZE <b>B</b>	DWG. NO. 320-103537
THIRD ANGLE PROJECTION 		REV <b>B</b>	
INTERPRET DRAWING PER ASME Y14.5-2018 AND Y14.100-2017		SCALE: 1:1	MASS: 73.98g
DO NOT SCALE DRAWING		SHEET 2 OF 2	

F12345